

# TECHNITRACE INC.

## T-LST

### Line Sensing Thermostat

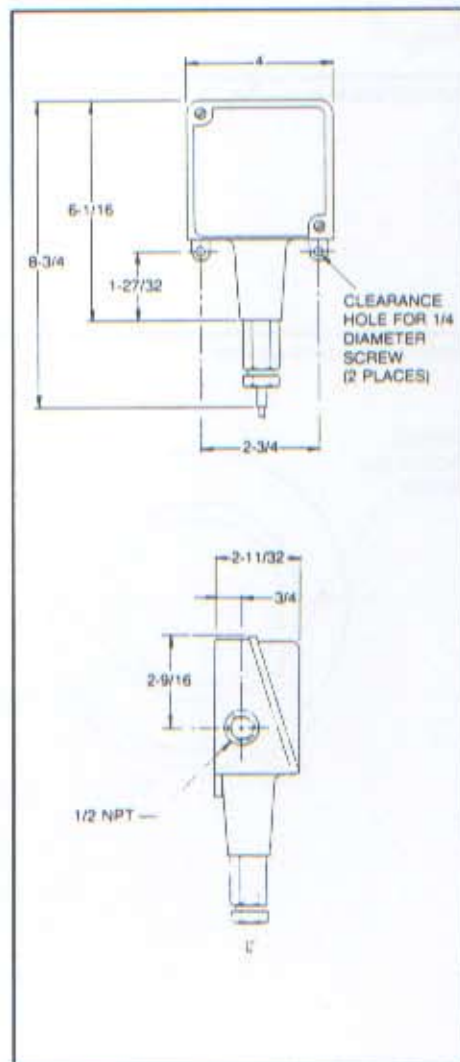


#### Description

The Technitrace T-LST thermostat is a watertight, dust tight and corrosion resistant temperature control in a lightweight die cast enclosure with an internal calibrated reference dial and tamper-proof adjustment for outdoor or indoor locations. The liquid-filled thermal system, with its stainless steel sensor stem, provides a very dependable and accurate control system.

#### Wiring

For heater control, low alarm (close on falling temperature) use COM and NC. For high alarm (close on rising temperature) use COM and NO.



#### Specifications

- Enclosure ..... Die cast aluminum with polyamid epoxy coating, NEMA 4X; water tight, dust tight and corrosion resistant
- Connection ..... Screw terminals on switch through 1/2-NPT hub
- Switch ..... SPDT UL listed with internal calibrated reference dial and tamper-proof adjustment
- Rating ..... 22 amps at 480 VAC
- Range ..... 15° - 140°F
- Sensor ..... 304 SS sensor stem
- Approval ..... UL listed/CSA certified
- Accuracy ..... ± 1% of adjustable range