

TECHNITRACE INC.

T-LST

Line Sensing Thermostat

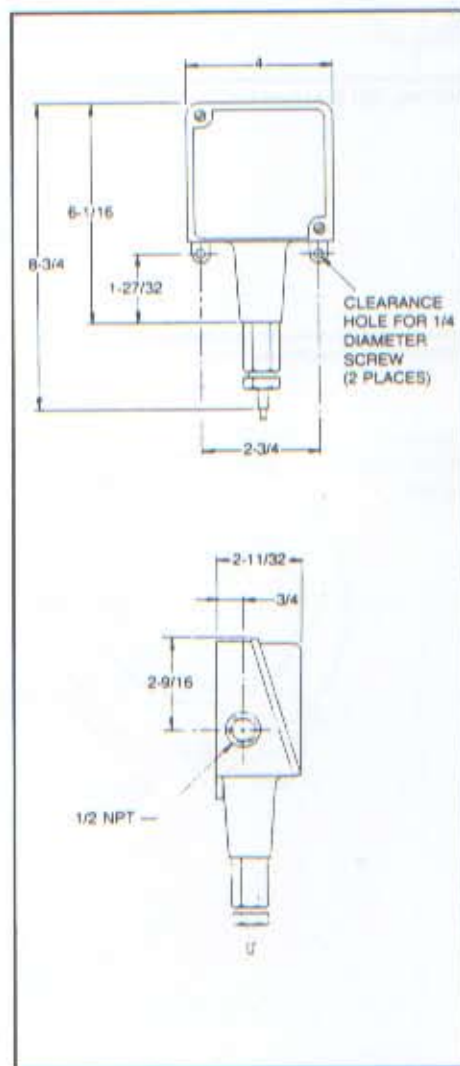


Description

The Technitrace T-LST thermostat is a watertight, dust tight and corrosion resistant temperature control in a lightweight die cast enclosure with an internal calibrated reference dial and tamper-proof adjustment for outdoor or indoor locations. The liquid-filled thermal system, with its stainless steel sensor stem, provides a very dependable and accurate control system.

Wiring

For heater control, low alarm (close on falling temperature) use COM and NC. For high alarm (close on rising temperature) use COM and NO.



Specifications

- Enclosure Die cast aluminum with polyamid epoxy coating, NEMA 4X; water tight, dust tight and corrosion resistant
- Connection Screw terminals on switch through 1/2-NPT hub
- Switch..... SPDT UL listed with internal calibrated reference dial and tamper-proof adjustment
- Rating..... 22 amps at 480 VAC
- Range..... 15° - 140°F
- Sensor..... 304 SS sensor stem
- Approval..... UL listed/CSA certified
- Accuracy..... ± 1% of adjustable range